

FIRST FLOOR



1. PORTE-COCHERE ENTRANCE: This was the main entrance used by Joan Dunsmuir and her guests. The panelling and ceiling are believed to be western red cedar. The floor tiles come from the Minton Tile Company, England.

2. MAIN HALL: Panelling in the Main Hall and Stairwell is made of white oak and was manufactured by A.H. Andrews & Company, Chicago, Illinois. The quotation on the Main Hall Fireplace, Welcome ever smiles and farewell goes out sighing is from Shakespeare's play, *Troilus and Cressida*. The clock on the mantle is original to the Main Hall. The Garden Entrance alcove (the arched door to the right of the fireplace) houses a Swiss bear hallstand original to the house.

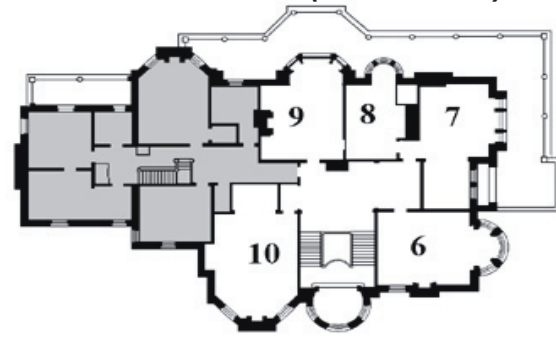
3. LIBRARY: The woodwork is Spanish mahogany. Note the unusual fireplace where the flue is bent to go around the window located above the firebox. The portraits on either side of the fireplace are Joan and Robert Dunsmuir. Robert died in 1889 before the Castle was completed. The cylindrical radiators on either side of the bay window are part of the house's original heating system and were patented in 1874. The original stained glass in the bay window may have been chosen to depict the Dunsmuir's Scottish and English heritage.

4. DRAWING ROOM: The stained glass window depicting a woman and a swan is a reproduction of the original; all other windows in the room are original. The 1898 Steinway piano comes from Hatley Park, home of the Dunsmuir's eldest son James. A fine art conservator restored the original hand painted and stencilled ceiling, removing five layers of house paint. The ceiling received its first coat of institutional paint in 1935 during the Victoria College period.

5. DINING ROOM: The door to the right of the built-in sideboard was used by the servants for access from the Pantry. The 3 large gold-framed paintings, 2 carved deer wall panels, and the dining table and matching chairs are original to this room.

TOUR CONTINUES UP THE MAIN STAIRS TO THE SECOND FLOOR ▷

SECOND FLOOR (GOING UP)



6. MRS. DUNSMUIR'S SITTING ROOM: Widow Joan Dunsmuir spent time here managing the vast family business left to her by husband, The Honourable Robert Dunsmuir.

7. EXHIBIT AREA: Originally, this room was much larger and was Joan Dunsmuir's Bedroom. During the Craigdarroch Military Hospital's years (1919-1921), it was significantly changed and made smaller by the addition of the women's washroom.

8. WOMEN'S WASHROOM: Now used as our public women's washroom, the washbasins and toilet stalls date to 1919.

9. JESSIE'S BEDROOM: Believed to be the bedroom of Dunsmuir daughter, Jessie, the stained glass in this room features British Columbia's provincial flower, the dogwood.

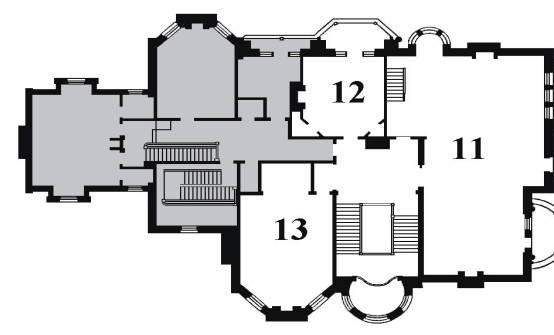
SPEAKING TUBES: In the hall on the wall between JESSIE'S BEDROOM (9) and the VICTORIA COLLEGE ROOM (10), you will notice a speaking tube, a simple intercom system that is original to the house.

10. VICTORIA COLLEGE ROOM: It is likely this guest bedroom was used by Dunsmuir's youngest son, Alexander, when he visited from his home in San Francisco. This room is now maintained by the Victoria College Craigdarroch Castle Alumni Association displaying memorabilia from 1921 to 1946.

VICTORIA COLLEGE	
Founded in 1903 as an affiliate of Montreal's McGill University, Victoria College moved to Craigdarroch in 1921 with enrollment of 160 students.	
In 1946, enrollment rose to 600 with returning WWII veterans and the College moved to new premises.	
More than 5,000 students attended Victoria College between 1921 and 1946.	

TOUR CONTINUES UP THE MAIN STAIRS TO THE THIRD FLOOR ▷

THIRD FLOOR (GOING UP)



11. BILLIARD ROOM: This billiard table is the same size as the original and manufactured by the same company, Burroughes & Watts of London, England. The room was used by the Dunsmuir daughters to relax and entertain. The telescope in the bay window belonged to James Dunsmuir when he resided at Hatley Park. Servants used the stairs near the telescope when serving the Fourth Floor Dance Hall. Graffiti carved into the wood panelling by Victoria College students has been preserved as part of the history of the house.

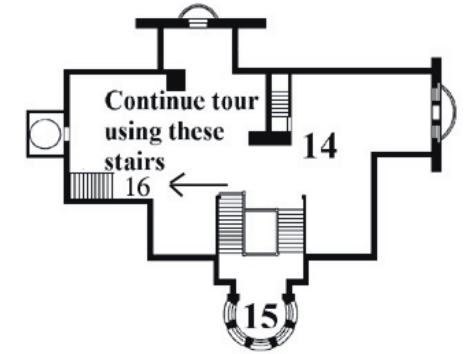
12. ROBERT HARVEY'S BEDROOM: It is believed this room was occupied by Robert Dunsmuir Harvey, Mrs. Dunsmuir's orphaned, twelve year old grandson. Robert Harvey moved into the Castle when Joan first took up residence in 1890.

13. EFFIE'S BEDROOM: It is believed the Dunsmuir's daughter, Effie, used this as her bedroom. The wall and ceiling surfaces are finished with calcimine (the type of the paint that was originally used in this room), and they have been restored to the original colour. Calcimine was most often used in modest homes. The recently-installed Brussels carpet is a reproduction of an 1885 design using authentic manufacturing techniques.

CHRONOLOGY OF CRAIGDARROCH	
1887 - 1890	Construction of Craigdarroch
1890 - 1908	Occupied by Joan Dunsmuir
1910 - 1919	Owned by Solomon Cameron
1919 - 1921	Craigdarroch Military Hospital
1921 - 1946	Victoria College
1946 - 1968	Victoria School Board
1969 - 1979	Victoria Conservatory of Music
1969 - Today	Historic House Museum

TOUR CONTINUES UP THE MAIN STAIRS TO THE FOURTH FLOOR ▷

FOURTH FLOOR



14. DANCE HALL: The 1879 Steinway piano is not original to the house and may be played by visitors with musical ability. Note the dance cards on the wall opposite the piano. The door and windows facing west gives a good view of downtown Victoria.

THE GARDEN: Through the south-facing window overlooking the lawn, you can see the Strait of Juan de Fuca and the Olympic Mountains in Washington State. Plans are underway to restore the walled lawn to the historic Dunsmuir gardens. The house's original 28 acres extended to Government House, the large building in the distance on the left with a Canadian flag flying in front.

15. THE TOWER: Appreciate the panoramic views which the Dunsmuir's would have enjoyed. The roof is tiled with red Vermont slate, and the terra cotta ridge and hip pieces were originally manufactured in Lincoln, California by Gladding, McBean. Note that the floor tiles here (as well as the floor tiles in the Porte Cochere on the main floor) came from the Minton Tile Company, England.

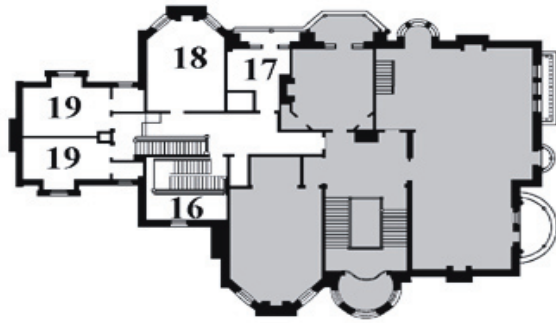


AS YOU COME DOWN FROM THE TOWER, YOU WILL BE PROCEEDING TO THE LEFT DOWN THE BACK STAIRCASE (SHOWN AS 16 ON THE MAP ABOVE.)

16. STAIRCASE: This was added in 1994 as part of a public safety upgrade of the house. The original use of the room that the staircase leads into has not yet been determined.

TOUR CONTINUES DOWN THE BACK STAIRS TO THE THIRD FLOOR TURN MAP OVER ▷

THIRD FLOOR (GOING DOWN)



17. ORIGINAL BATHROOM: This bathroom would have been for family use. The tiles are believed to be original and restoration is in progress.

18. REGISTRAR'S OFFICE formerly LIZZIE'S BEDROOM: Possibly this was the bedroom for Elizabeth Harvey, an orphaned Dunsmuir grand-daughter. It may be that family bedrooms on this side of the home were intended for junior family members.

Dumbwaiter: In the hallway between the REGISTRAR'S OFFICE (18) and the SERVANT'S BEDROOM (19) there is a dumbwaiter. This is a small, enclosed, manually-operated lift which transported items between the basement, kitchen, second and third floors. No longer operational, the shaft contains many of the modern mechanical systems installed in the house.

Laundry Chute: In the hallway between the two Servant's Rooms is the Laundry Chute which likely terminated in a Laundry Room in the basement.

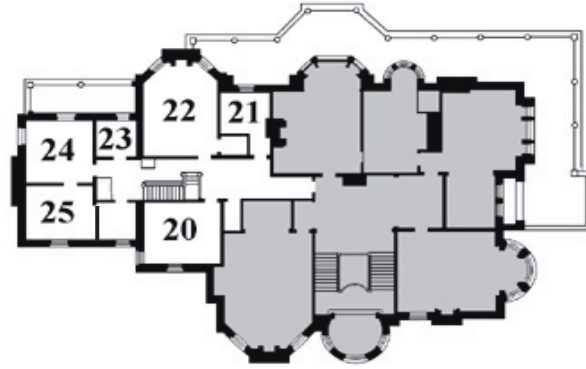
19. SERVANT'S ROOM: Both of these rooms were likely bedrooms used by the live-in servants. The room on the left is currently being used as the Curator's Office.

CASTLE QUICK FACTS

- Craigdarroch means "rocky oak place" in Gaelic.
- The Castle is 25,572 sq. ft. including the basement.
- It took 5 railcars to ship 2128 oak panels from Chicago.
- There are 17 fireplaces and seven chimney stacks.
- The Castle had: gas lighting as well as electric lighting; hot and cold running water for indoor plumbing; central heating; telephones; and a burglar alarm system.
- The main walls are brick construction and are faced with sandstone from Dunsmuir's own quarry.

TOUR CONTINUES DOWN THE BACK STAIRS
TO THE SECOND FLOOR ▷

SECOND FLOOR (GOING DOWN)



20. VOLUNTEER OFFICE: Please respect the privacy of the staff and volunteers who use this office; the Castle Society is grateful to the 120 volunteers who donate their valuable time to the Castle. During the Craigdarroch Military Hospital years, this room may have been used as a serving room fitted out with food warming appliances, but no remnants of that use remain.

CRAGDARROCH MILITARY HOSPITAL

After the first world war, specialized hospitals were required for thousands of returning injured and ill soldiers. The Castle was chosen as one of three hospitals in Canada to house "long treatment cases and incurables". On September 25, 1919 Craigdarroch Military Hospital was opened by His Royal Highness, The Prince Of Wales. (Later Edward VIII)

21. MEN'S WASHROOM: Now our public men's washroom, this was one of the original Dunsmuir bathrooms.

22. MAUD'S BEDROOM: Probably occupied by a younger family member, possibly Henrietta Maud Dunsmuir.

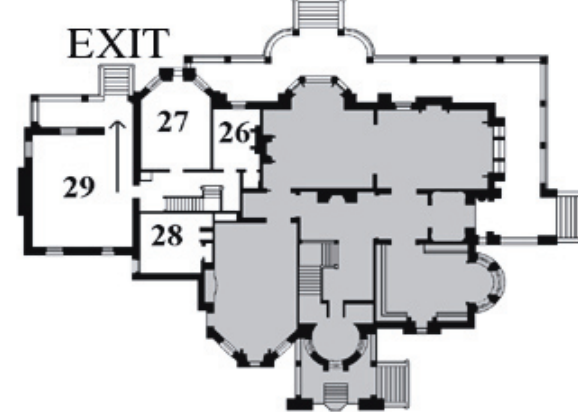
23. LINEN CLOSET: This room, panelled in tongue-and-groove cedar, was likely a linen closet. If the door is closed, the room is in use as an office.

24. SERVANT'S SITTING ROOM: Likely a sitting room for the Head Housekeeper who may have had a suite of rooms (#24 & #25). The laundry chute is in the hallway to the left of this door.

25. SERVANT'S BEDROOM: Likely a bedroom for the Head Housekeeper.

TOUR CONTINUES DOWN THE BACK STAIRS
TO THE FIRST FLOOR ▷

FIRST FLOOR



26. SMOKING ROOM: The stained glass window depicts Sir Walter Raleigh (1552-1618) who is credited with making tobacco popular in Britain.

27. BREAKFAST ROOM: The Dunsmuirs took breakfast in this room lined with cherry panelling. The eastern and southern exposures set off some of the finest stained glass in the house.

28. STAFF ROOM formerly THE PANTRY: Yet to be restored, the pantry is currently used by staff and volunteers as a lunchroom. This room would likely have been used to store dishes and do final meal preparation.

BASEMENT: The door to the left of the pantry leads to a staff area in the basement. Only two-thirds of the basement area has ceilings high enough to use for: a workshop; storage rooms; stand-by generator; fire sprinkler pump; and oil-fired hotwater boiler.

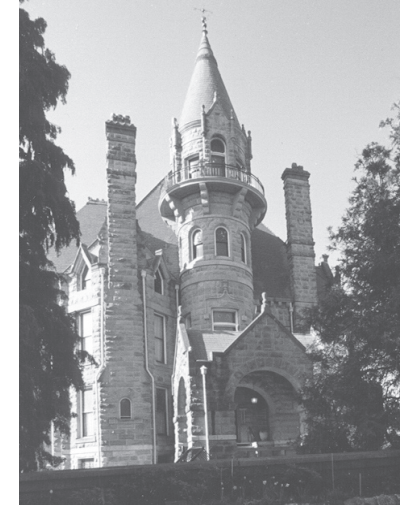
29. MUSEUM STORE formerly THE KITCHEN: Originally, this area had two rooms with a hallway leading to the outside door. The wall of this hallway, now removed, was the terminus of all the speaking tubes installed in the house. On the ceiling, you can see traces where walls were located and on the far wall there is an illustration of what the kitchen may have looked like. All Museum Store revenues directly contribute to the conservation of Craigdarroch Castle.

HELP US RECYCLE!
IF YOU DON'T WISH TO KEEP THIS BROCHURE AS
A SOUVENIR, DROP IT OFF IN THE BIN OUTSIDE
THE MUSEUM GIFT SHOP AS YOU EXIT.
**THANK YOU FOR YOUR VISIT AND
YOUR SUPPORT!**



Craigdarroch Castle

Proud to be a Designated National Historic Site



Completed in 1890, the fortune amassed by coal baron Robert Dunsmuir is reflected in the Castle's four floors of exquisite stained glass, intricate woodwork and lavish Victorian-era furnishings. The original estate extended over 28 acres.

Since Joan Dunsmuir's death in 1908, the Castle has been used as: Craigdarroch Military Hospital; Victoria College; offices for the Victoria School Board; Victoria Conservatory of Music; and finally as Craigdarroch Castle Historic House Museum.

Now owned by a not-for-profit charity (The Craigdarroch Castle Historical Museum Society), conservation of this national treasure is funded almost exclusively from revenues contributed by approximately 150,000 annual visitors.

1050 Joan Crescent, Victoria, B.C. V8S 3L5
(250) 592-5323
info@craigdarrochcastle.com
www.thecastle.ca